

Cinnabar Inclusions in Ethiopian Opal

The authors recently examined a 15.8 ct Ethiopian opal (Figure 4) that contained numerous red dendritic particles that each measured up to 70–100 μm in diameter (Figure 5). The Ethiopian origin of the opal was confirmed by its physical properties (slight hydrophane

character and rounded columnar structure) and its chemical composition (high Ba concentration; Rondeau *et al.* 2010). The inclusions were identified by Raman micro-spectroscopy as cinnabar (HgS). Energy-dispersive X-ray fluorescence (EDXRF) chemical analyses of



Figure 4: This 15.8 ct opal from Ethiopia was examined for this report. Photo by C. Caplan.

the top surface of the sample confirmed the presence of Hg and S. Cinnabar and opal are associated in numerous localities, particularly in the western USA (Knopf 1915; Gettens *et al.* 1972; <https://www.mindat.org/min-3004.html>). However, cinnabar is only rarely mentioned as inclusions in opal (see, e.g., Gaillou 2015). Also known is an opalised or silicified cinnabar material known as myrickite, in which the high concentration of cinnabar inclusions induces an intense orange or red colour (Manutchehr-Danai 2009; Melero *et al.* 2019).

To the authors' knowledge, this is the first time that cinnabar inclusions have been documented in opal from Ethiopia. Their dendritic habit suggests relatively fast growth, whereas magnetite inclusions reported in Ethiopian opal have a well-formed octahedral habit (Rondeau *et al.* 2010), suggesting slow growth. This points to a vast domain of parameters possible (at least in terms of growth rate and chemistry) for the formation of inclusions in Ethiopian opal, which perhaps reflects the expansive region over which those deposits occur.

Féodor Blumentritt¹ (feodor.blumentritt@ggtl-lab.org),
Candice Caplan¹, Emmanuel Fritsch FGA²
and Franck Notari¹

¹GGTL Laboratories Switzerland, Geneva, Switzerland

²IMN-CNRS and University of Nantes, France

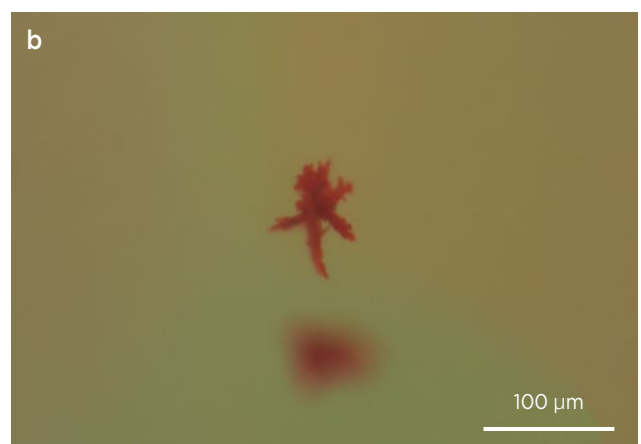
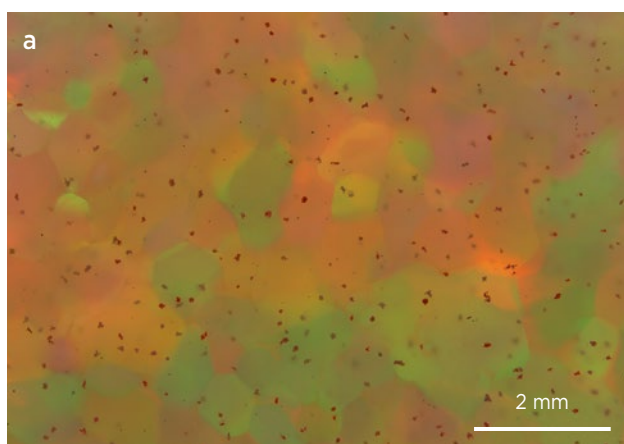


Figure 5: (a) The opal contains red cinnabar inclusions across the top surface of the cabochon. (b) A closer look at one of these inclusions shows its dendritic form. Photomicrographs by F. Notari.

References

- Gaillou, E. 2015. An overview of gem opals: From the geology to color and microstructure. *Thirteenth Annual Sinkankas Symposium—Opal*, Carlsbad, California, USA, 18 April, 10–19.
- Gettens, R.J., Feller, R.L. & Chase, W.T. 1972. Vermilion and cinnabar. *Studies in Conservation*, **17**(2), 45–69, <https://doi.org/10.2307/1505572>.
- Melero, D., Lobato, B., López-Antón, M.A. & Martínez-Tarazona, M.R. 2019. Identification of mercury species in minerals with different matrices and impurities by thermal desorption technique. *Environmental Science and Pollution Research*, **26**(11), 10867–10874, <https://doi.org/10.1007/s11356-019-04245-8>.
- Knopf, A. 1915. Some cinnabar deposits in western Nevada. *Contributions to Economic Geology, 1915. Part I. Metals and Nonmetals Except Fuels*, U.S. Geological Survey Bulletin 620, 59–68, <https://pubs.usgs.gov/bul/0620d/report.pdf>.
- Manutchehr-Danai, M. 2009. *Dictionary of Gems and Gemology*. Springer, Berlin and Heidelberg, Germany, 1,037 pp., <https://doi.org/10.1007/978-3-540-72816-0>.
- Rondeau, B., Fritsch, E., Mazzero, F., Gauthier, J.-P., Cenk-Tok, B., Bekele, E. & Gaillou, E. 2010. Play-of-color opal from Wegel Tena, Wollo Province, Ethiopia. *Gems & Gemology*, **46**(2), 90–105, <https://doi.org/10.5741/gems.46.2.90>.

Blumentritt F., Caplan C., Fritsch E., Notari F., (2022). Cinnabar Inclusions in Ethiopian Opal, *J. Gemm.*, Vol. 38, N° 3, pp 217-219